

MODEL

Jazzy Elite ES-2S-SS ¹	Group 2: Standard (K0822)
Jazzy Elite ES-2S-C ¹	Group 2: Standard (K0823)
Weight Capacity	300 lbs.
Turning Radius	24.75"
Overall Width³	22.75"
Overall Length³	34.75"
Maximum Speed²	Up to 4 mph
Ground Clearance³	1.5"
Front Wheels	3" solid anti-tips
Drive Wheels	9" solid
Rear Wheels	6" solid casters
Drivetrain	Two-motor, in-line, front-wheel drive
Braking System	Regenerative and electro-mechanical
Suspension Type	Limited
High-back Seat Sizes	16' x 16"-18", 18" x 18"-20", 20" x 18"-20"
Seat-to-Floor Range	21.5" - 23.5"
Per Charge Range^{3,5}	Up to 13.5 miles
Standard Electronics	40A, PG GC3
Component Weights	Base 69 lbs. (<i>heaviest piece</i>) Seat 43 lbs. (<i>comfort high-back</i>) Batteries 25 lbs. each
Battery Requirements^{4,6}	(2) 12 volt, U-1 batteries
Battery Charger	3.5 amp, off-board
Warranty	Frame: 5-year limited Drivetrain: 13-month Electronics: 13-month Battery: 13-month

¹ Jazzy® Power Chairs are FDA Class II Medical Devices designed to aid individuals with mobility impairments.

² Varies with user weight, terrain type, battery amp-hour (AH), battery charge, battery condition and tire condition. These specifications can be subject to a variance of (+/- 10%).

³ Due to manufacturing tolerances and continual product improvement, this specification can be subject to a variance of (+ or - 3%).

⁴ AGM or gel cell type required.

⁵ Tested in accordance with ANSI/RESNA, WC Vol2, section 4 & ISO 7176-4 standards. Results derived from theoretical calculations based on battery specifications and drive system performance. Test conducted at maximum weight capacity.

⁶ Battery weight may vary based on manufacturer.

NOTE: All specifications subject to change without notice. The information contained herein is correct at the time of publication; we reserve the right to alter specifications without prior notice. Speed and range vary with user weight, terrain type, battery charge, battery condition and tire pressure. Due to manufacturing tolerances and continual product improvement, length, width, turning radius and ground clearance can be subject to variance of + or - 3%. Special order seats or non-standard dimensions will not be fold-flat and depth-adjustable.

PRIDE[®]
MOBILITY
LIVE YOUR BEST[®]

(US) 800-800-8586 • (Canada) 888-570-1113

pridemobility.com |    

HCPCS codes provided should not be considered as legal advice and do not guarantee reimbursement. DME providers are responsible for determining appropriate billing codes when submitting for insurance reimbursement.

The information contained herein is correct at time of publication; we reserve the right to alter specifications without prior notice.

0001959-091520

Jazzy^{® 1}
ELITE ES

**OPTIMAL INDOOR
MANEUVERABILITY
IN SMALL SPACES**



FDA Class II
Medical Device¹

AMERICA'S FAVORITE POWER CHAIR

gojazzy.com |    

POWER, PERFORMANCE AND STYLE

Depth-adjustable, limited-recline, fold-flat, high-back seat



Intuitive controller is easy to operate

Flip-up foot platform offers greater comfort

FDA Class II Medical Device¹



Front-wheel drive design



Easy-access freewheel levers

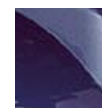


PG GC3 Controller

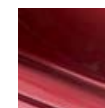
An experience so superior, it can only be elite. The **Jazzy® Elite ES¹** features large, front-drive wheels to absorb the bumps and uneven surfaces of everyday life. The comfortable, high-back seat gives you the support you need all day, every day.

- Depth-adjustable, limited-recline, fold-flat, high-back seat
- Universal, fixed, in-line joystick mount
- Flip-up foot platform
- Black, flat-free, non-marking tires
- Easy-access free-wheel lever
- 60" lap belt

Available Colors



Viper Blue



Candy Apple Red

Optional Seating

Deluxe contour, limited recline, available sizes:

- 18"W x 16"D

Deluxe contour, limited recline, high back with solid seat pan, available sizes:

- 16"W x 16"D or 16"W x 18"D

Depth-adjustable, comfort seat, limited recline high-back with solid seat pan, available sizes:

- 16"W x 16" - 18"D or 18"W x 18" - 20"D

Options

- Bell-shaped foot platform
- Elevating leg rests
- Heel loops
- Height-adjustable foot platform bracket
- Residual limb support
- Swing-away legrests
- Swing-away joystick

Accessories

- Cane/crutch holder
- Cell phone holder
- Cup holder
- Flag holder
- Lap belt (50", 70", 80", 90")
- Military patches
- Oxygen tank holder
- Rear basket
- Saddle bag
- Walker holder
- Weather cover
- XLR USB charger