

Capri All Electric Quick Start Guide

Presented by: USYI, est 1979



STEP 1

Carefully clip carton straps. Lift the outer box and recycle the cardboard



STEP 2

The Capri arrives 99% assembled in fully recyclable, sturdy protective packaging. Take care in unwrapping the protective plastic from scooter. Clip wire ties from brake handles



STEP 3

Locate the ignition key, already located in the ignition. Open the under seat storage compartment with ignition key. It's towards the left side rear of the Capri as your sitting on the Capri. Add a slight inward pressure on the key to open the compartment.



Cargo Box mounting bracket and mounting holes

Storage compartment key lock

STEP 4

Under Seat Contents

- Battery Charger 120VAC to 48VDC
- Two fully adjustable rearview mirrors
- Heavy-Duty floor mat
- VIN cover plate. The VIN plate is removed for easy viewing of your scooter's Vehicle Identification. Simply snap the VIN plate into place.



STEP 5

Cargo Box Installation

You will need to install your Cargo Box on the Capri's metal Cargo Box bracket. The Cargo Box arrives with mounting hardware. There are:

- Two rubber vibration insulator pads. These are installed between the metal bracket and the Cargo Box.
- (2) Metal topside brackets.
- (4) Nuts, washers and bolts. Note: examine the mounting holes on your Cargo Box and Rear Scooter mounting bracket so four points line up.
- Gray Cargo Box mat.
- Cargo box locking keys.



STEP 6

Install Mirrors

The mirrors require a 5/8" or 12mm wrench to tighten and properly install and adjust each mirror.



STEP 7

Initial Charging Cycle

- Check the master power breaker is in the "ON" position prior to connecting the charger.



- The charging system simply plugs in to the receptacle below the front seat. Then plug the remaining end of the charger in to any 120VAC receptacle.



Charging System Indicators
'RED' Charging
'GREEN' Fully Charged



Master Power Breaker Switch located under drivers seat

Note: Batteries typically arrive fully charged
Regular charging times are typically 6-8 hours.

Capri All Electric Quick Start Guide

Presented by: USYI, est 1979

STEP 8

Brake Check Prior to Riding

- Check FRONT and REAR brakes. Squeeze each brake lever. There should be about 1.5" to 2" of travel before you experience firm resistance.
- To adjust the brakes simple use a 9/16" or 15mm open end wrench. As you face of the brake cable clockwise tightens, the reverse loosens.

Front Brake



Rear Brake



Brake Adjustment Nut Clockwise to Tighten

Note: The Right Side brake grip operates the front brake. The Left Side brake grip operates the rear brakes. Always use both brakes when stopping. It is good driving practice to lightly flash your brakes when making a turn. This practice in addition to using the scooters turn singles makes one more visible to traffic.



STEP 9

Ignition Switch

- OFF, always turn the ignition key in the OFF position when the Capri is parked. Your battery will continue to discharge as long as the key in set to the ON position.
- To ride set key to ON.



Step 11

Control Switches Right Side

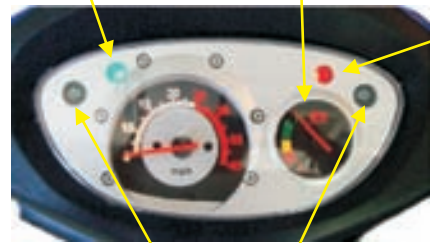
- Switch Full Left All Lights & Dash ON
- Switch Center Dash Lights Only
- Switch Full Right Lights Off
- Right side Horn



Step 10

Dash Panel

- Lights ON Indicator BLUE
- Battery Power Level
- Power "KEY ON" Indicator RED
- Left-Right Turn Signals GREEN Flashing



Step 12

Control Switches Left Side

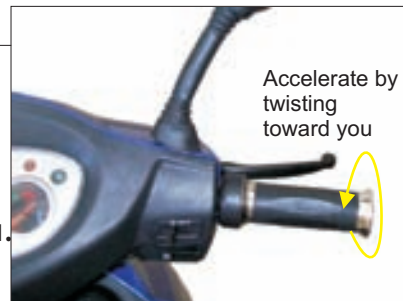
- Headlights Hi-Low Beam
- Left Side Horn
- Turn Signals Left-Right This switch locks as you set the signal left or right. Gently push the switch inward to turn off the signal.



Step 12a

Let's go!

The Capri uses a DC drive system to accelerate and to assist in braking. At first, gently twist the throttle towards you. Acceleration increases the further back you twist.



Accelerate by twisting toward you

Finally...

Quick Start Guide Review
We highly recommend reading the entire Capri Scooter Manual for complete safety operation and required warranty service intervals. *This Quick Start Guide is only a brief overview.*



⚠ WARNING

- THIS IS A QUICK START GUIDE PLEASE READ THE ENTIRE OPERATORS MANUAL. SEVERE INJURY OR DEATH can result if supplied manuals and instructions are not followed.
- Maximum loading weight 245lbs.
- ALWAYS wear a Department (DOT) of Transportation Approved helmet when operating the scooter.

USYI Inc.
Technical Support
217B Seneca Way
Havre de Grace, MD 21078
717.395.3250
info@RideGreenUS.com

USYI Inc.
Corporate Headquarters
1220 US Hwy. 1, Suite F
North Palm Beach, FL 33408
561.656.0720
info@RideGreenUS.com